



Typical Details

VHB by 3M

OVERVIEW

The VHB adhesive (Very High Bond) developed by 3M is another simple yet cost-effective installation system for Vitrabond ACM. Without routing and folding, the Vitrabond ACM panels are cut and installed over furring using standard carpentry tools and methods

Joints are caulked to give the appearance of a rout & return wet seal system.

APPLICATIONS

Vitrabond can be installed with VHB by 3M in many applications, including soffits, fasciae, canopies, feature walls, window bays, signage, building accents, and facades.

MASKING TAPE TO PANEL
EDGE PRIOR TO SEALANT

CONTINUOUS SEALANT BED
TO JOINT AND PANEL REAR

3"
8

4 mm VITRABOND

VITRAFIX SEALANT

3M VHB TAPE

GALV. HAT CHANNEL

TYPICAL PANEL JOINT DETAIL
NTS

GALV. HAT CHANNEL

4 mm VITRABOND

3"
8

VITRAFIX SEALANT

3M VHB TAPE

TYPICAL HORIZONTAL JOINT DETAIL
NTS

Sheet 1 Of 12

Drawn By
NCDS

Date Drawn
21/10/2014

Revisions

No. _____ Date _____
No. _____ Date _____

Project Number

DWG-01

Project

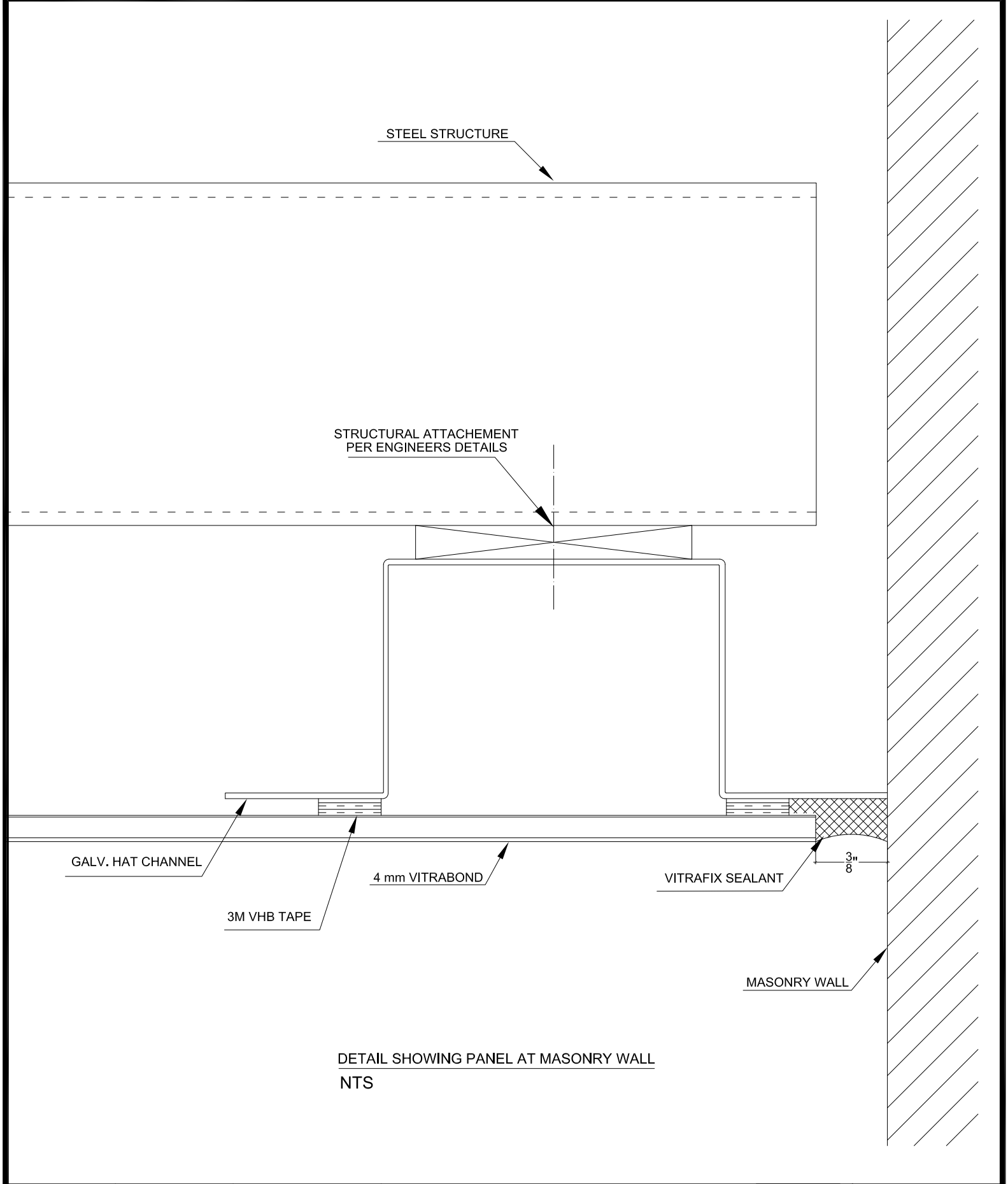
VHB SYSTEM

© Copyright Fairview Architectural LLC

FAIRVIEW
ARCHITECTURAL

vitrabond
ALUMINIUM COMPOSITE PANEL

www.fairviewarchitectural.com



Sheet 2 Of 12

Drawn By
NCDS
Date Drawn
21/10/2014
Revisions
No. _____ Date _____
No. _____ Date _____

Project Number

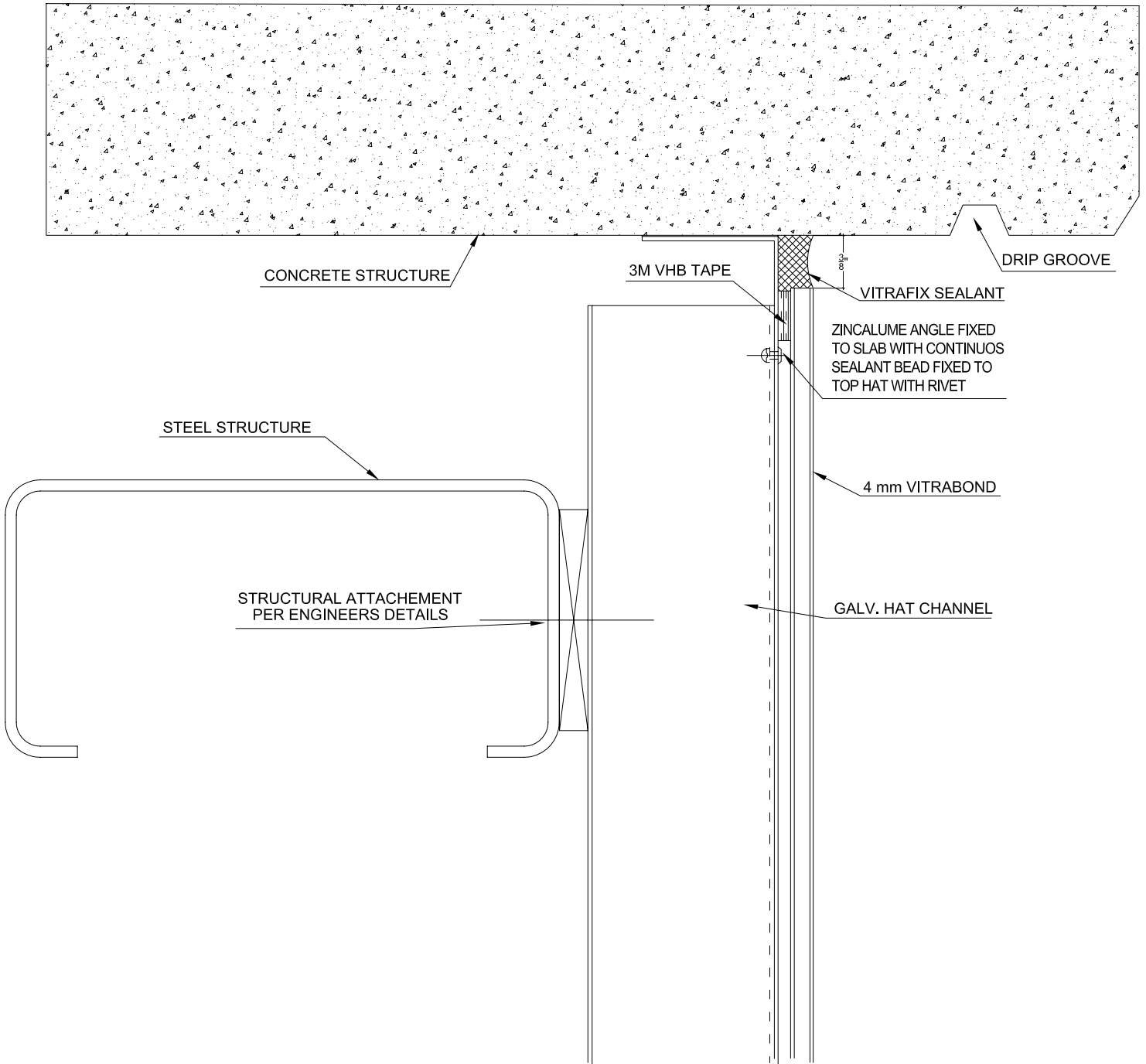
DWG-01

Project

VHB SYSTEM

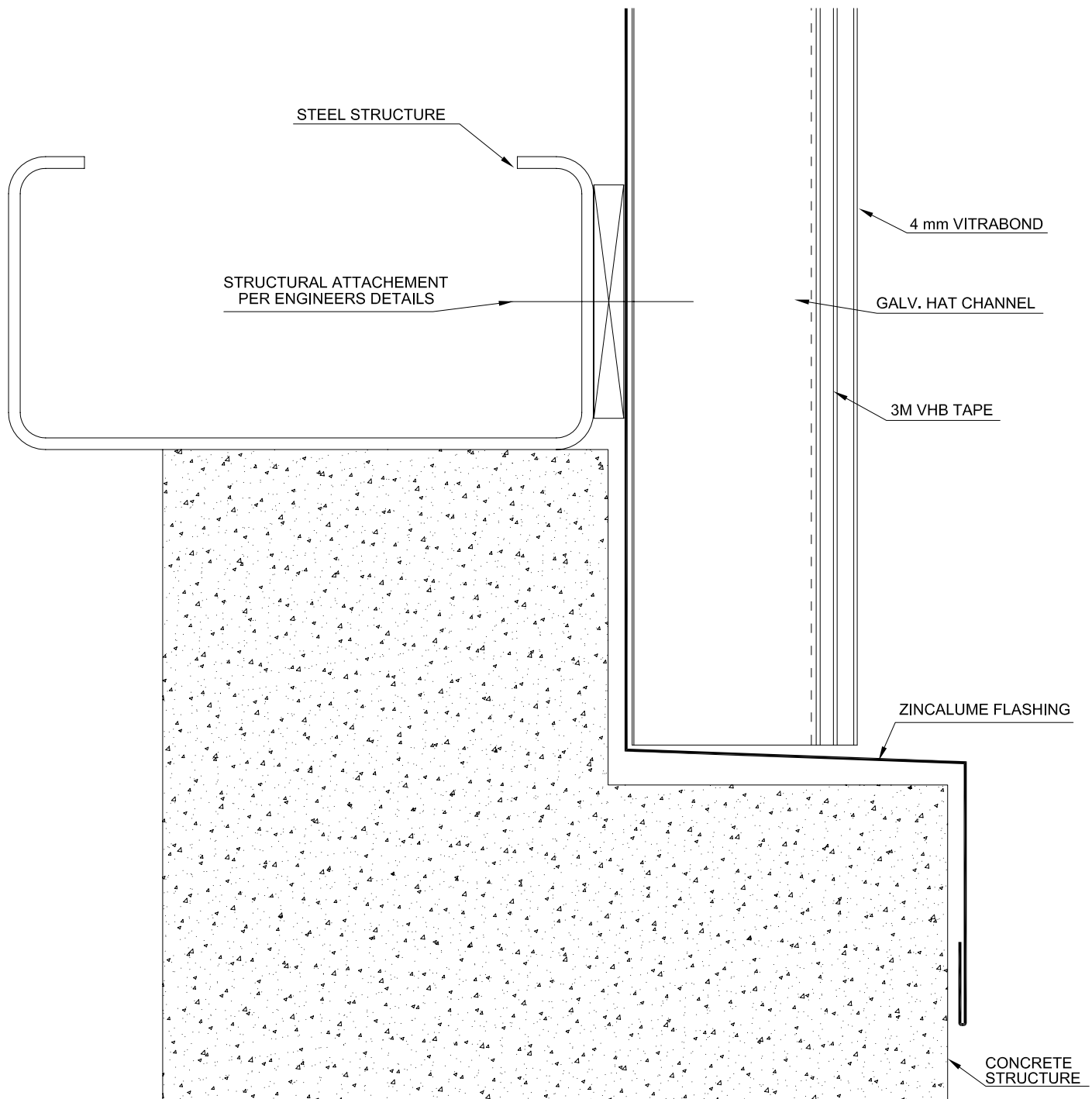
© Copyright Fairview Architectural LLC

www.fairviewarchitectural.com



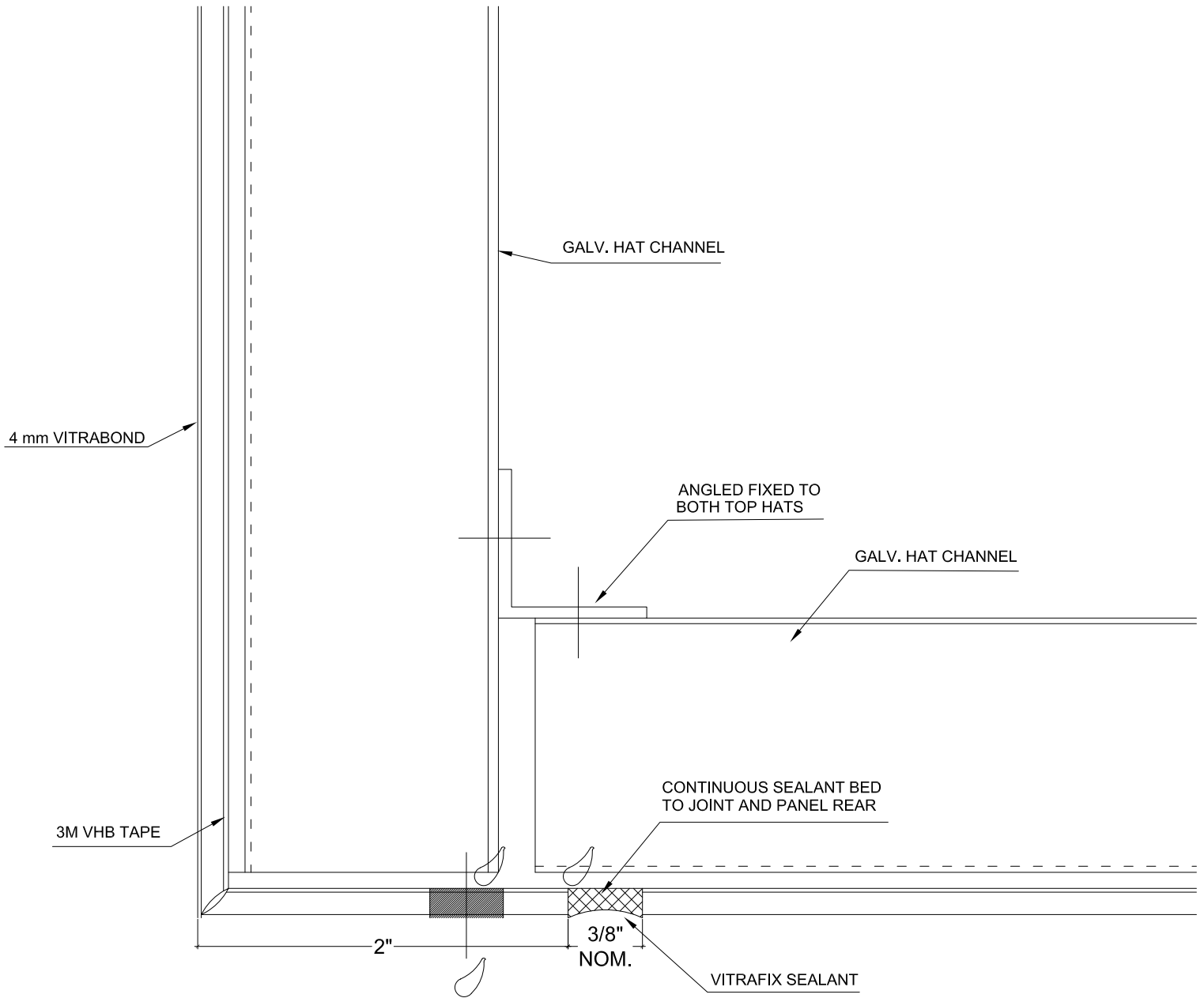
DETAIL AT SLAB JUNCTION-HEAD
NTS

Sheet 3 Of 12	Drawn By NCDS	Project Number DWG-01	Project VHB SYSTEM	  www.fairviewarchitectural.com
	Date Drawn 21/10/2014			
	Revisions No. _____ Date _____ No. _____ Date _____			
© Copyright Fairview Architectural LLC				



DETAIL AT SLAB JUNCTION-BASE
NTS

Sheet 4 Of 12	Drawn By NCDS	Project Number DWG-01	Project VHB SYSTEM	  www.fairviewarchitectural.com
	Date Drawn 21/10/2014			
	Revisions No. _____ Date _____ No. _____ Date _____			
© Copyright Fairview Architectural LLC				



DETAIL AT SOFIT JUNCTION
 NTS

Sheet 5	Of 12	Drawn By NCDS	Project Number DWG-01	Project VHB SYSTEM	  www.fairviewarchitectural.com
		Date Drawn 21/10/2014			
© Copyright Fairview Architectural LLC					

STEEL STRUCTURE

STRUCTURAL ATTACHEMENT
PER ENGINEERS DETAILS

3/8"
NOM.

VITRAFIX SEALANT

OTHER CLADDING
SYSTEM

1.2 mm GAL. ANGLE

3M VHB TAPE

4 mm VITRABOND

GALV. HAT CHANNEL

WALL ABUTMENT DETAIL
NTS

Sheet 6 Of 12

Drawn By
NCDS
Date Drawn
21/10/2014
Revisions
No. _____ Date _____
No. _____ Date _____

Project Number

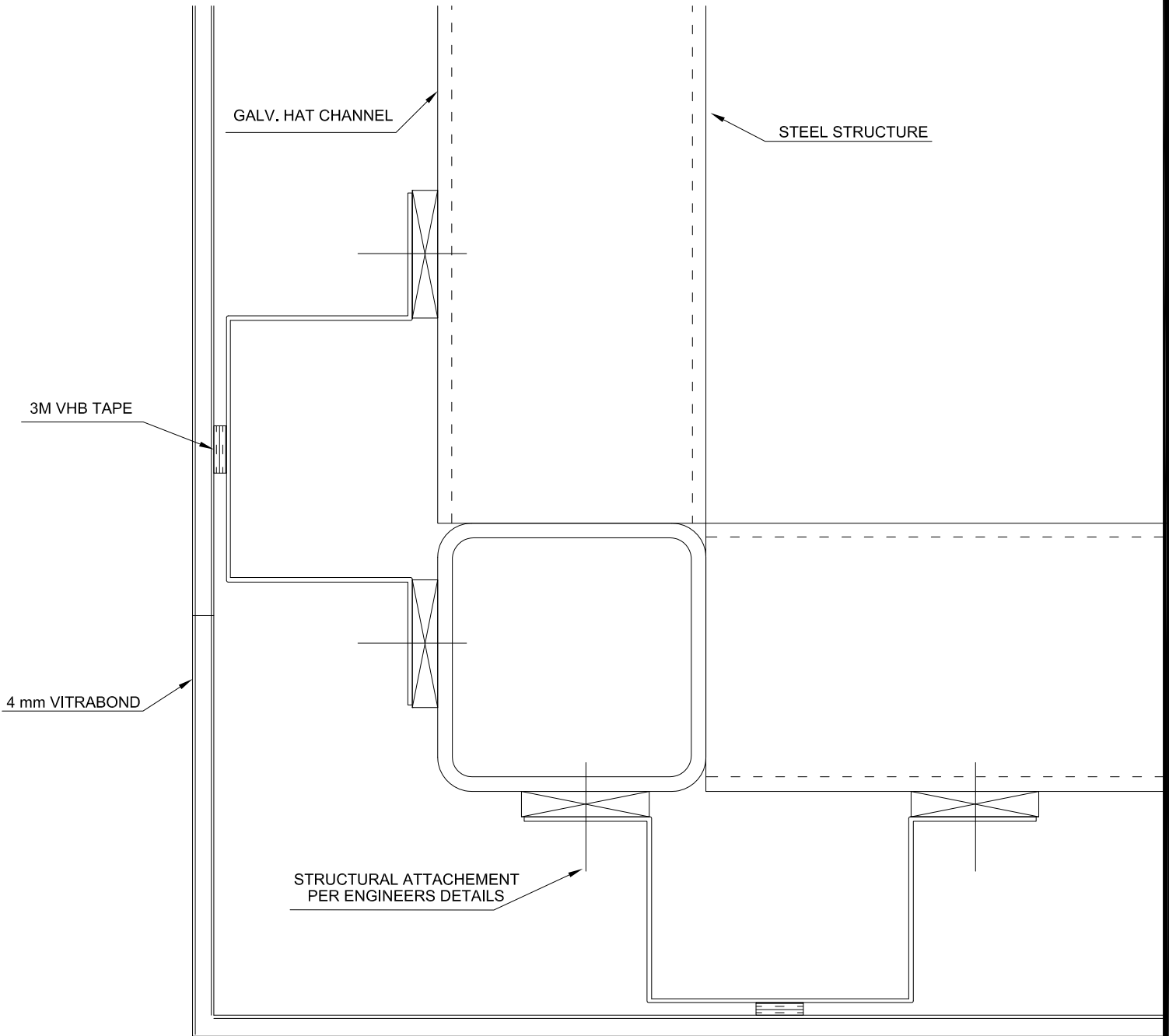
DWG-01

Project

VHB SYSTEM

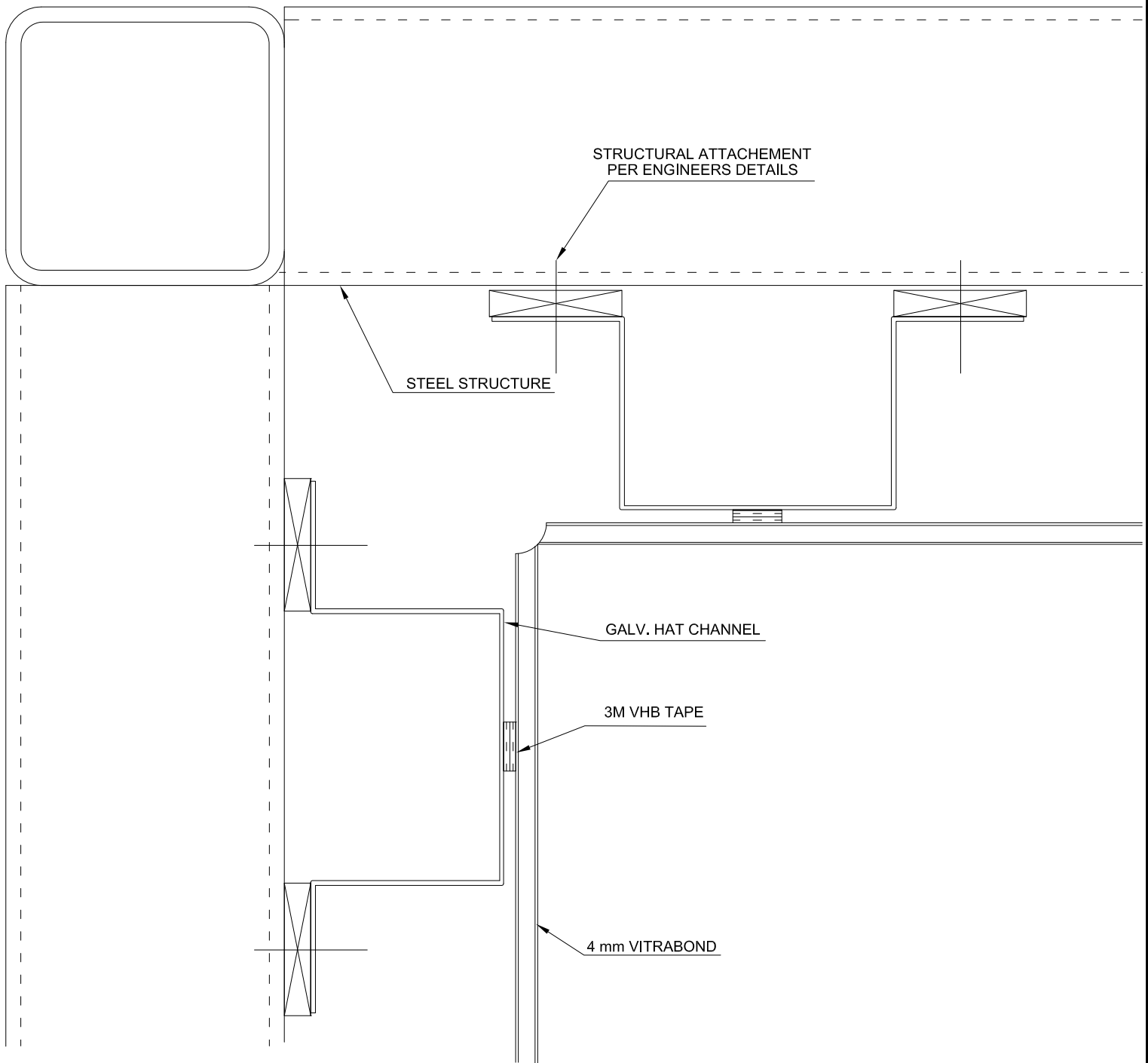
© Copyright Fairview Architectural LLC





EXTERNAL CORNER DETAIL
NTS

Sheet 7 Of 12	Drawn By NCDS	Project Number DWG-01	Project VHB SYSTEM	  www.fairviewarchitectural.com
	Date Drawn 21/10/2014			
© Copyright Fairview Architectural LLC				



INTERNAL CORNER DETAIL
NTS

Sheet 8 Of 12

Drawn By
NCDS
Date Drawn
21/10/2014
Revisions
No. _____ Date _____
No. _____ Date _____

Project Number

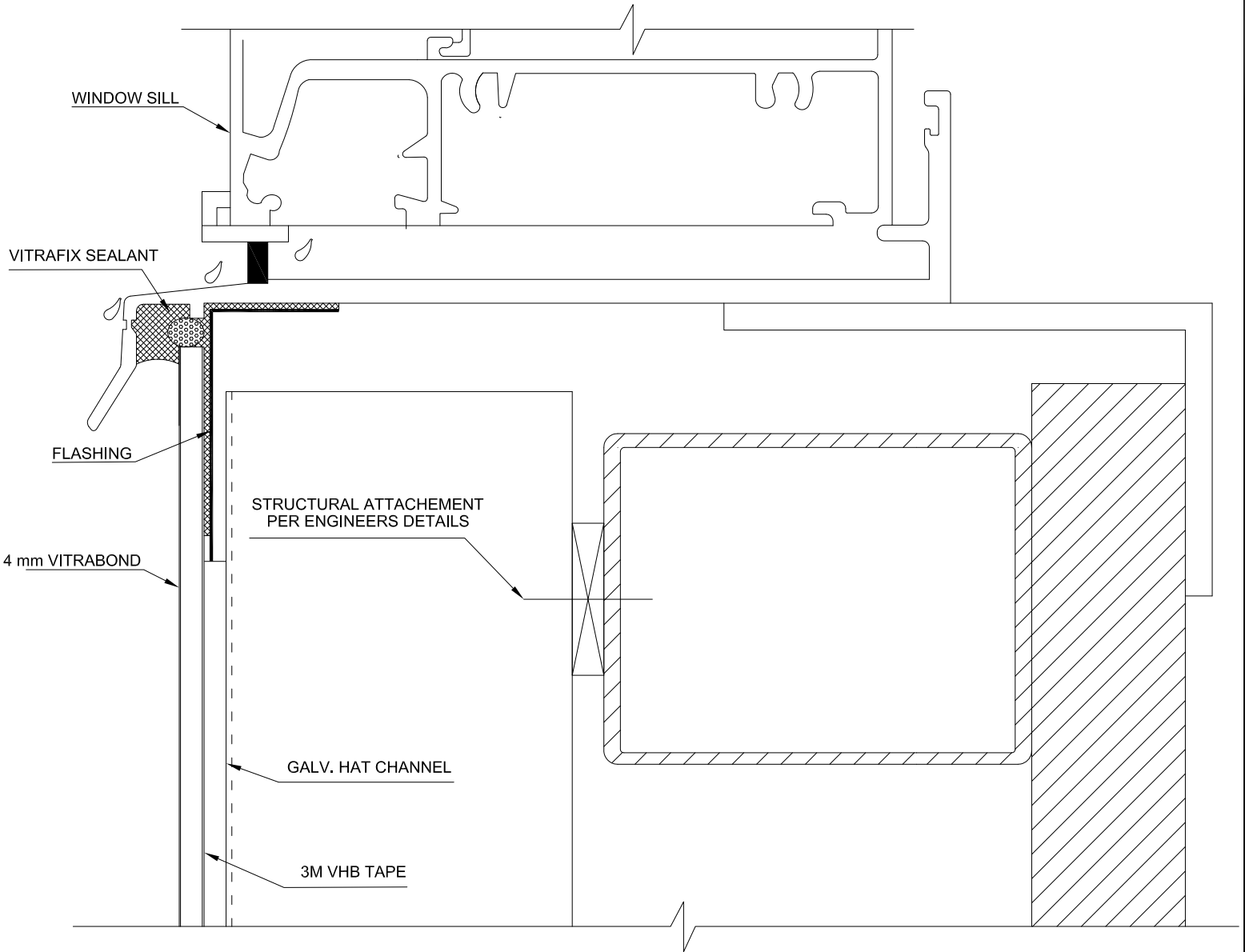
DWG-01

Project

VHB SYSTEM

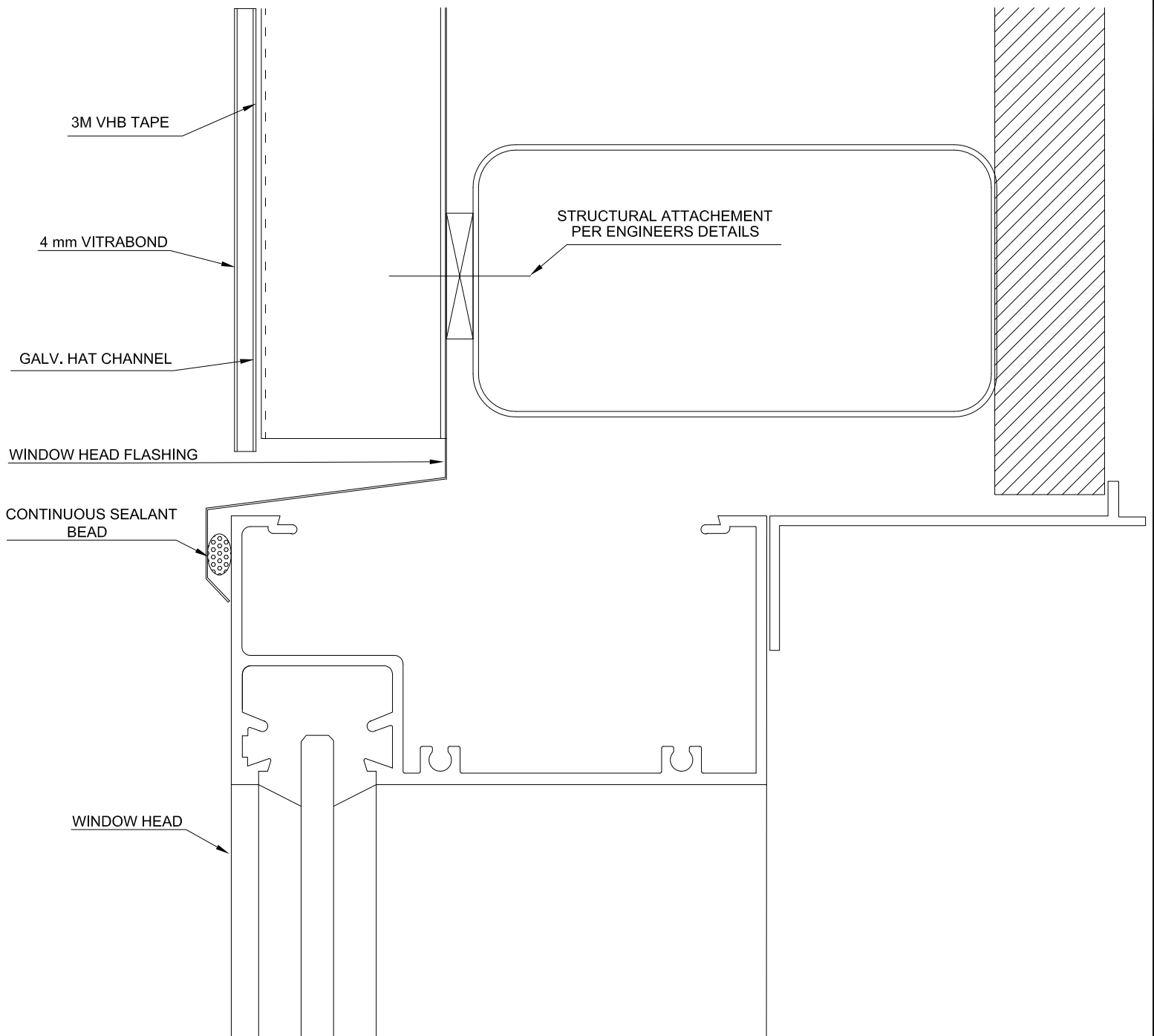
© Copyright Fairview Architectural LLC





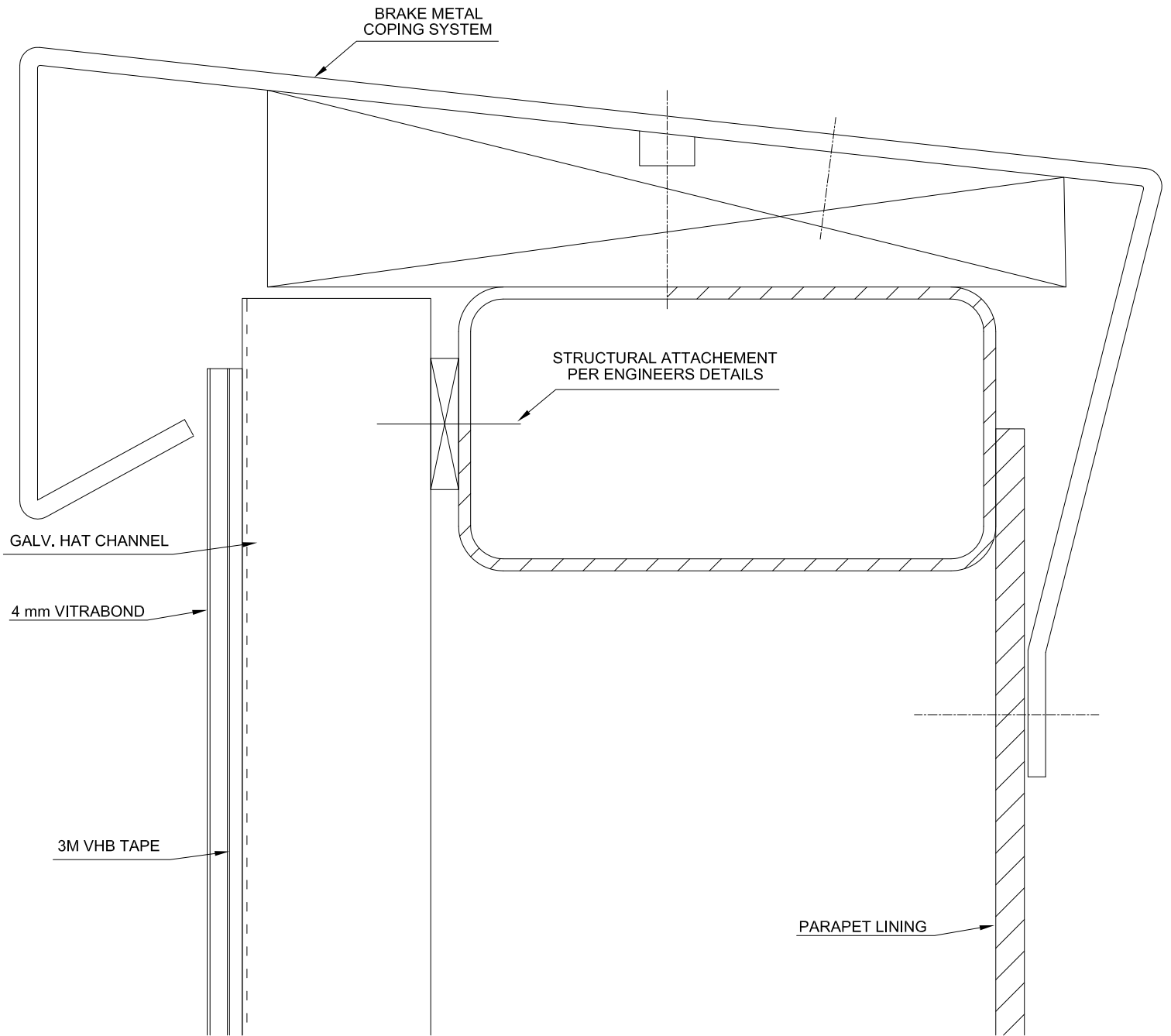
WINDOW SIL DETAIL
NTS

Sheet 9 Of 12	Drawn By NCDS	Project Number DWG-01	Project VHB SYSTEM	  ALUMINIUM COMPOSITE PANEL www.fairviewarchitectural.com		
	Date Drawn 21/10/2014				Revisions No. _____ Date _____ No. _____ Date _____	© Copyright Fairview Architectural LLC



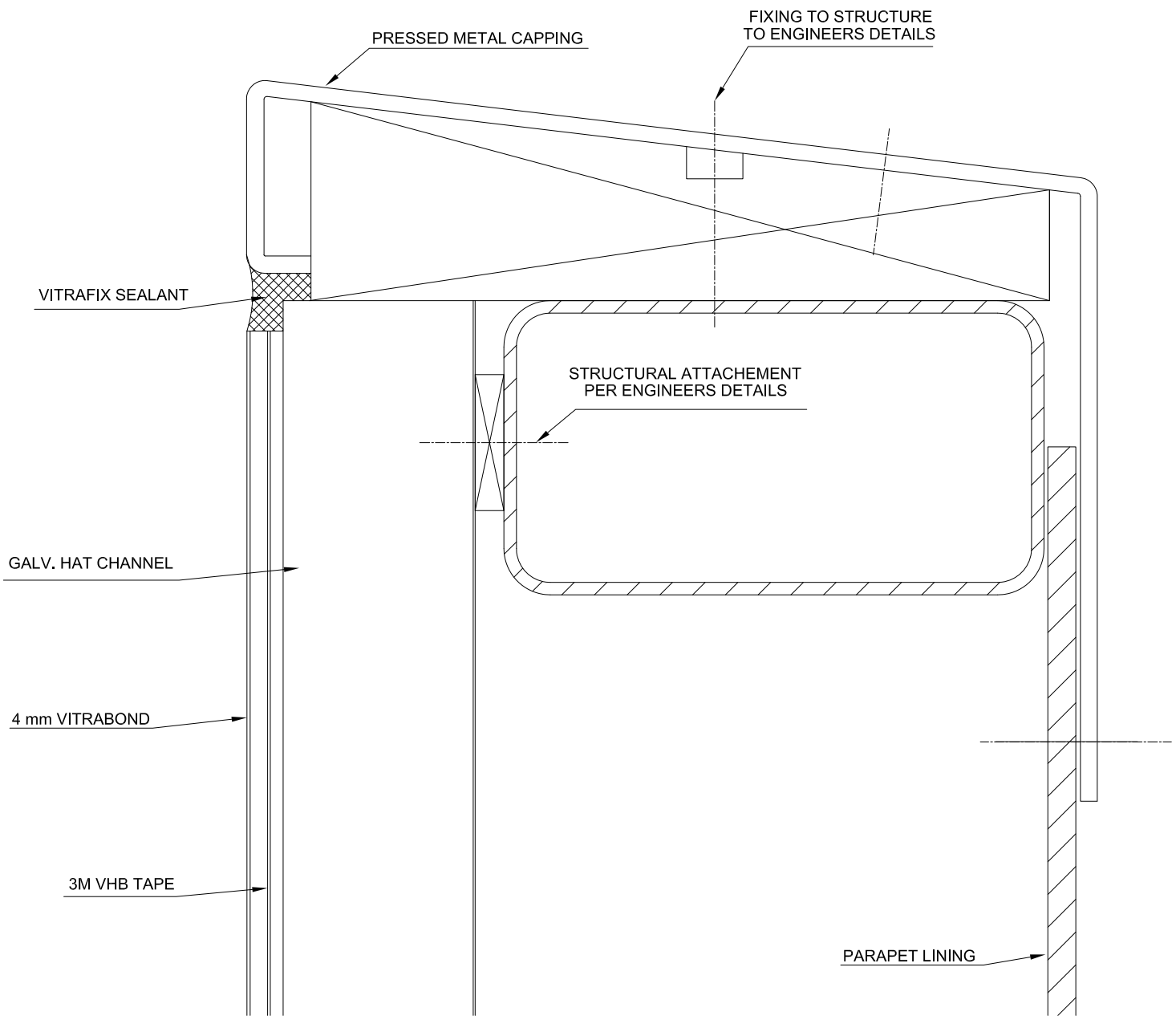
WINDOW HEAD DETAIL
NTS

Sheet 10 Of 12	Drawn By NCDS	Project Number DWG-01	Project VHB SYSTEM	  www.fairviewarchitectural.com
	Date Drawn 21/10/2014			
© Copyright Fairview Architectural LLC				



PARAPET CAPPING DETAIL 1
NTS

Sheet 11 Of 12	Drawn By NCDS	Project Number DWG-01	Project VHB SYSTEM	  www.fairviewarchitectural.com
	Date Drawn 21/10/2014			
			© Copyright Fairview Architectural LLC	



PARAPET CAPPING DETAIL 2
 NTS

Drawn By
 NCDS
 Date Drawn
 21/10/2014
 Revisions
 No. _____ Date _____
 No. _____ Date _____

Project Number
 DWG-01

Project
 VHB SYSTEM

FAIRVIEW
 ARCHITECTURAL

 vitrabond
 ALUMINIUM COMPOSITE PANEL
 www.fairviewarchitectural.com

Sheet 12 Of 12