



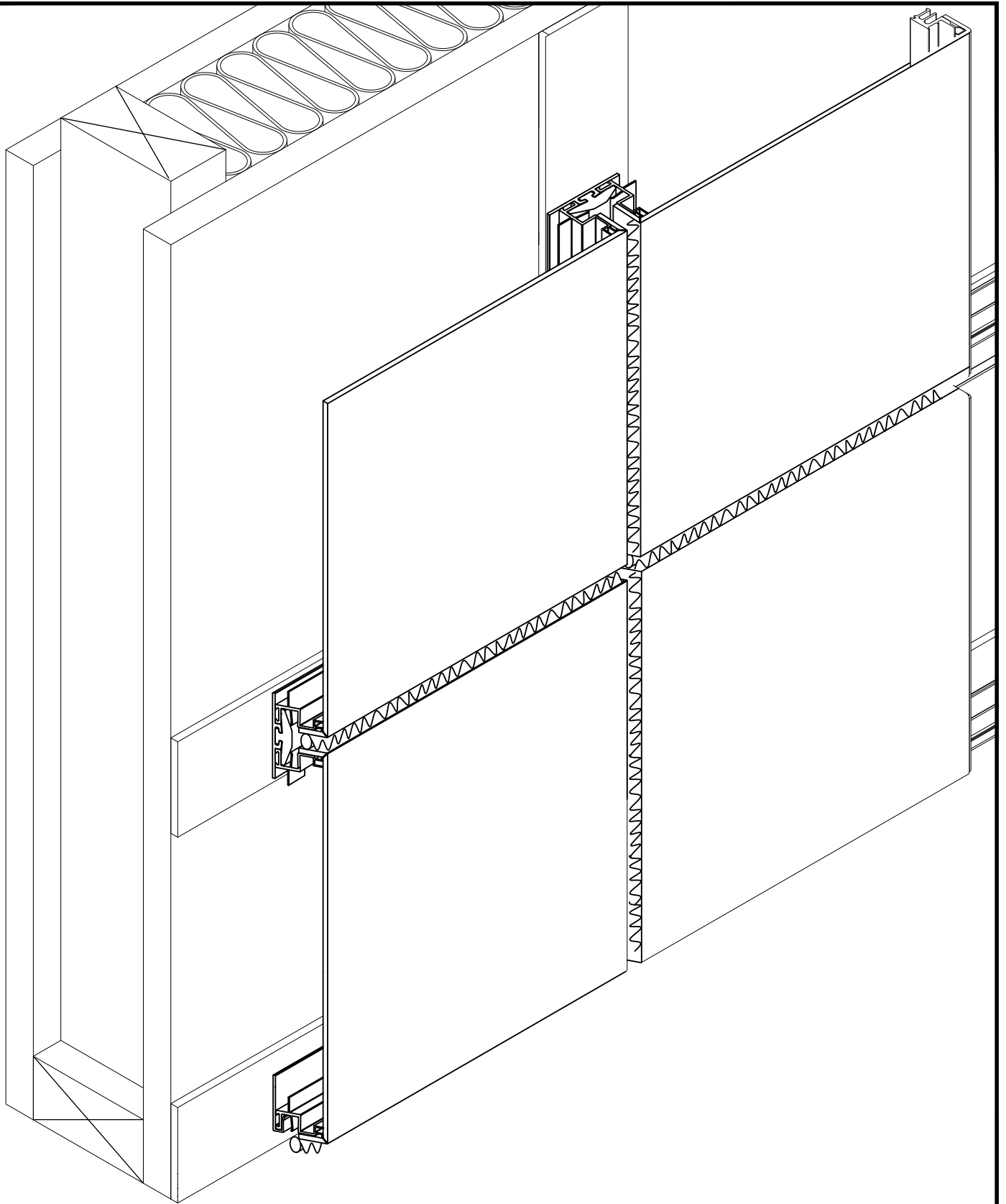
GENERAL DETAILS

- 2: SYSTEM ISOMETRIC
- 3: ATTACHMENT EXTRUSIONS

SECTION DETAILS

- 4: SILL
- 5: TYPICAL VERTICAL
- 6: WINDOW SILL
- 7A-B: PARAPET
- 8A-B: INSIDE CORNER
- 9: OUTSIDE CORNER
- 10: JAMB
- 11: TYPICAL HORIZONTAL
- 12: DIFFERENT DEPTH PANEL JAMB
- 13: DIFFERENT DEPTH PANEL SILL
- 14: DIFFERENT DEPTH VERTICAL
- 15: DIFFERENT DEPTH HEAD
- 16: DISSIMILAR SYSTEMS - JAMB
- 17: DISSIMILAR SYSTEMS - SILL

Sheet 1	Drawn By NCDS	Project Number DWG-01	Project	ARROWHEAD SEALED PANEL SYSTEM ELEVATION	  <small>www.fairview-na.com</small>
	Date Drawn 2017.04.24				
	Revisions No. _____ Date _____ No. _____ Date _____				
			© Copyright Fairview Architectural LLC		



Sheet

2

Drawn By
NCDS

Date Drawn
2017.04.24

Revisions

No. _____ Date _____
No. _____ Date _____

Project Number

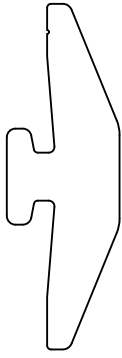
DWG-01

Project

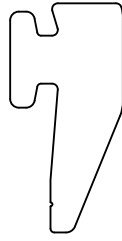
ARROWHEAD SEALED PANEL SYSTEM
SYSTEM ISOMETRIC

© Copyright Fairview Architectural LLC

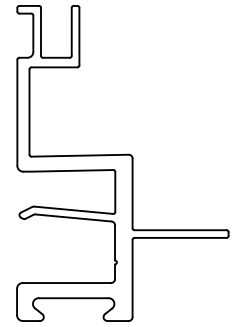




AH-104 T-CLIP



AH-107 PERIMETER CLIP



AH-101 FRAME



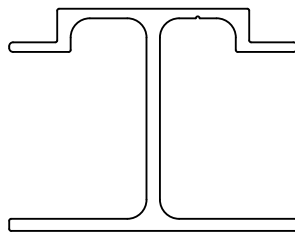
AH-102 BASE





AH-103 MOD. BASE



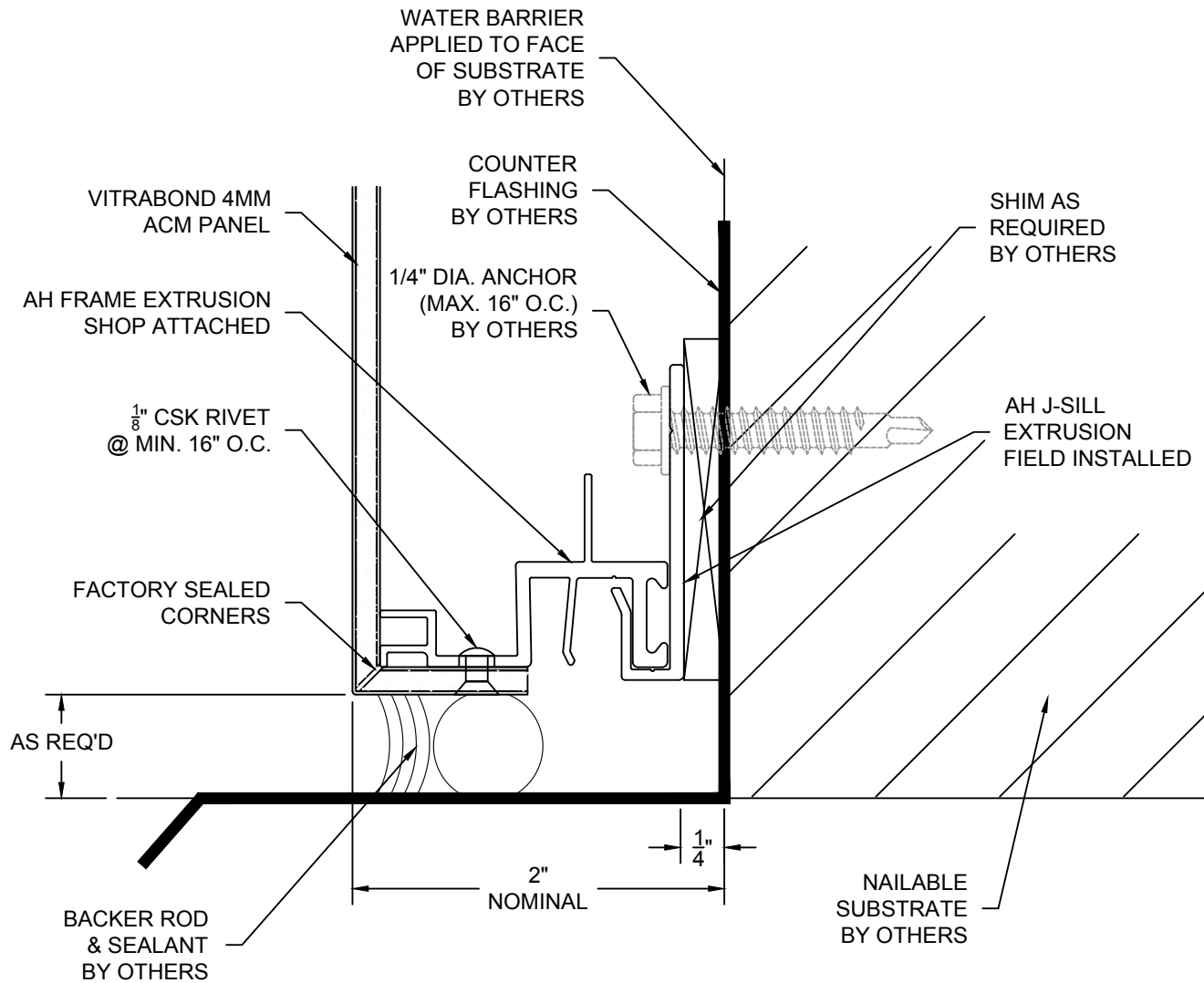
AH-105 J-SILL





AH-106 STIFFENER

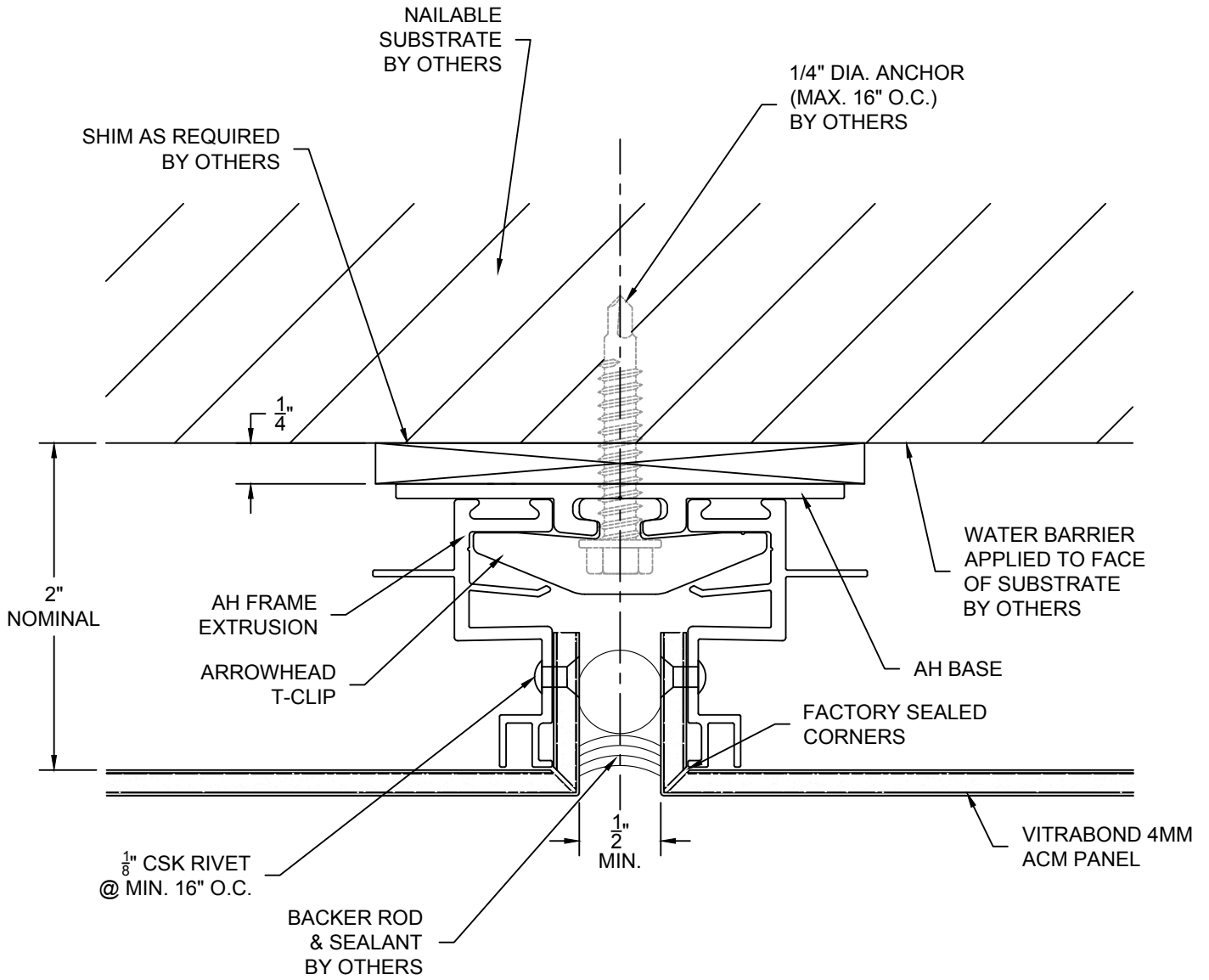
Sheet 3	Drawn By NCDS	Project Number DWG-01	Project ARROWHEAD SEALED PANEL SYSTEM ATTACHMENT EXTRUSIONS	  <small>www.fairview-na.com</small>
	Date Drawn 2017.04.24			
	Revisions No. _____ Date _____ No. _____ Date _____			
	©Copyright Fairview Architectural LLC			



NOTE:
 BRIDGE ACROSS STUDS WHERE
 NON-NAILABLE SUBSTRATE EXISTS.



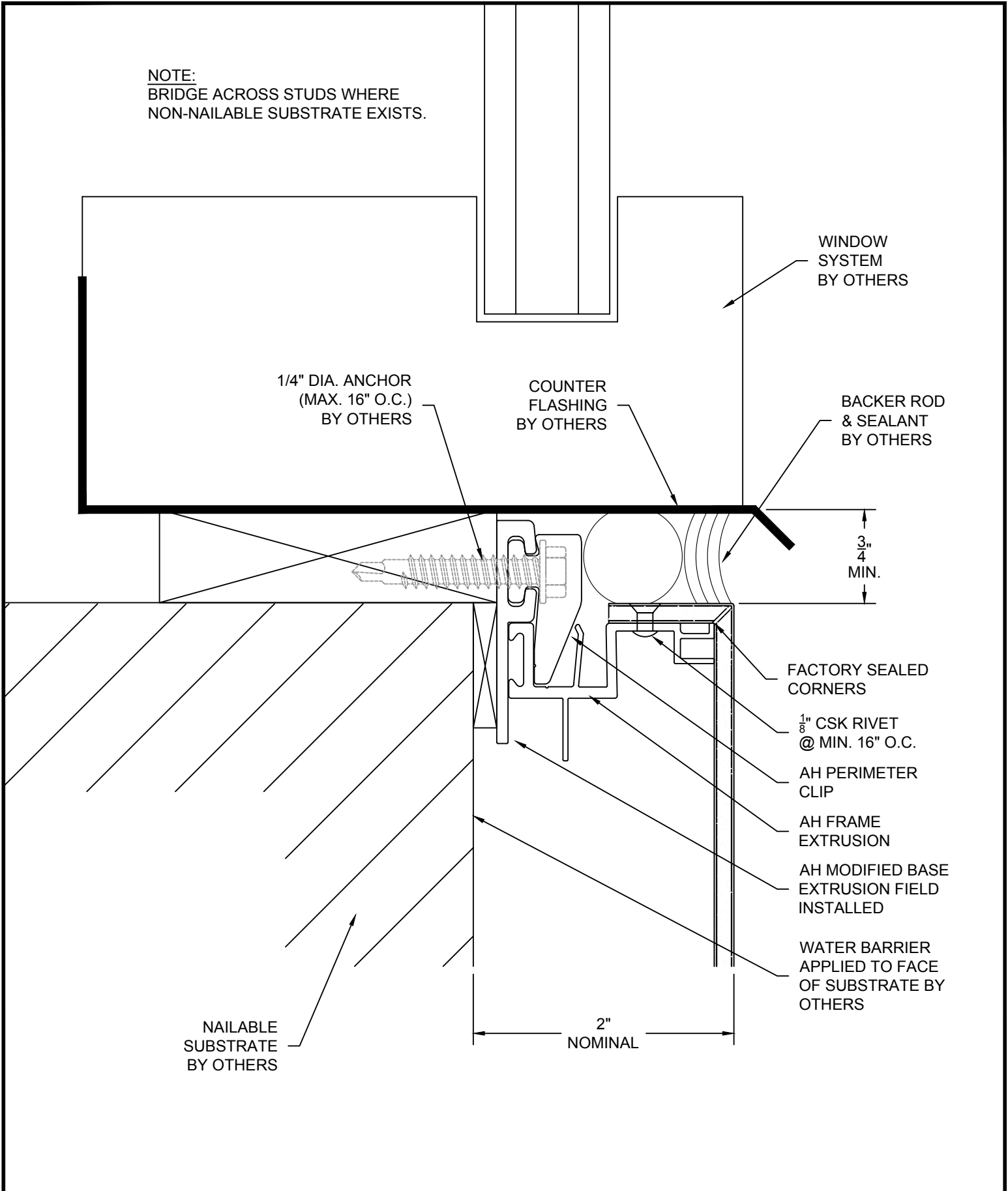
Sheet 4	Drawn By NCDS	Project Number DWG-01	Project	ARROWHEAD SEALED PANEL SYSTEM BASE DETAIL	  <small>www.fairview-na.com</small>
	Date Drawn 2017.04.24				
	Revisions				
	No. _____ Date _____ No. _____ Date _____				
			© Copyright Fairview Architectural LLC		

NOTE:
BRIDGE ACROSS STUDS WHERE
NON-NAILABLE SUBSTRATE EXISTS.



Sheet 5	Drawn By NCDS	Project Number DWG-01	Project ARROWHEAD SEALED PANEL SYSTEM TYPICAL VERTICAL DETAIL	  <small>www.fairview-na.com</small>
	Date Drawn 2017.04.24			
	Revisions No. _____ Date _____ No. _____ Date _____			
© Copyright Fairview Architectural LLC				

NOTE:
BRIDGE ACROSS STUDS WHERE
NON-NAILABLE SUBSTRATE EXISTS.



WINDOW
SYSTEM
BY OTHERS

1/4" DIA. ANCHOR
(MAX. 16" O.C.)
BY OTHERS

COUNTER
FLASHING
BY OTHERS

BACKER ROD
& SEALANT
BY OTHERS

3/4"
MIN.

FACTORY SEALED
CORNERS

1/8" CSK RIVET
@ MIN. 16" O.C.

AH PERIMETER
CLIP

AH FRAME
EXTRUSION

AH MODIFIED BASE
EXTRUSION FIELD
INSTALLED

WATER BARRIER
APPLIED TO FACE
OF SUBSTRATE BY
OTHERS

NAILABLE
SUBSTRATE
BY OTHERS

2"
NOMINAL

**ARROWHEAD SEALED PANEL SYSTEM
DISSIMILAR SYSTEMS**



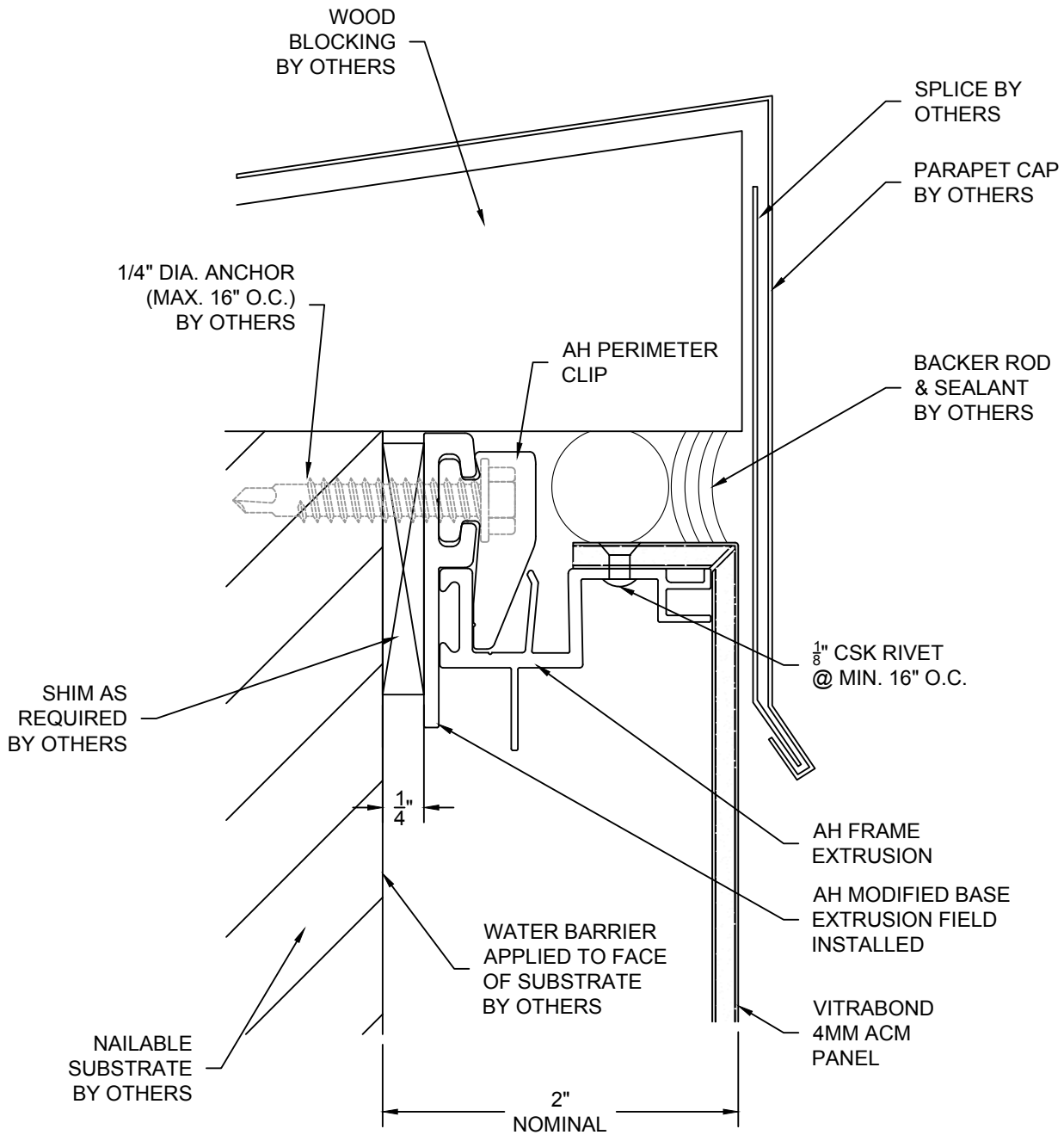
Drawn By NCDS	Project Number DWG-01
Date Drawn 2017.04.24	
Revisions No. _____ Date _____ No. _____ Date _____	



Project	Project Number DWG-01
Project	
Project	

Project	Project Number DWG-01
Project	
Project	

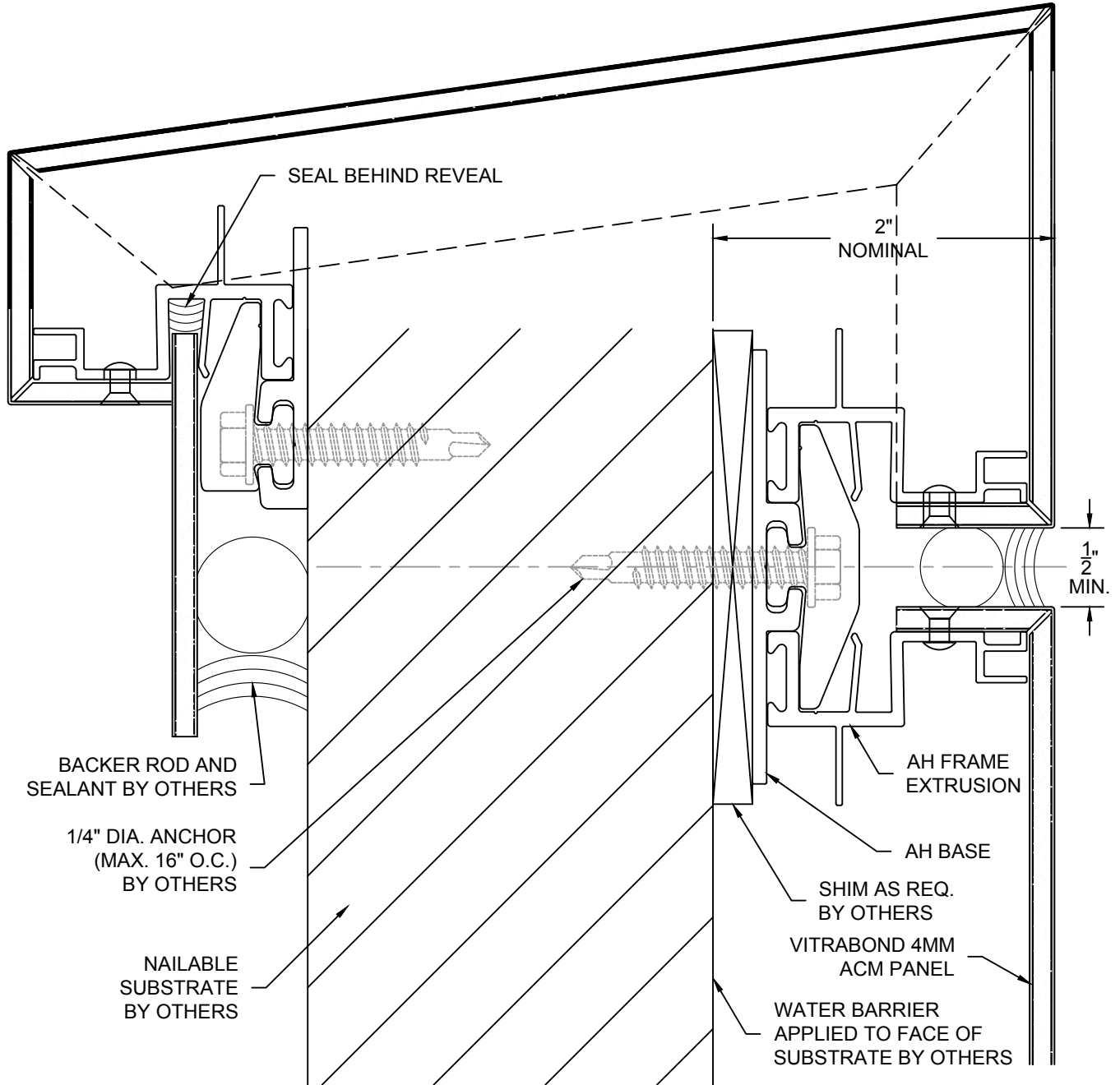
Sheet	Project Number DWG-01
6	
6	



NOTE:
BRIDGE ACROSS STUDS WHERE
NON-NAILABLE SUBSTRATE EXISTS.



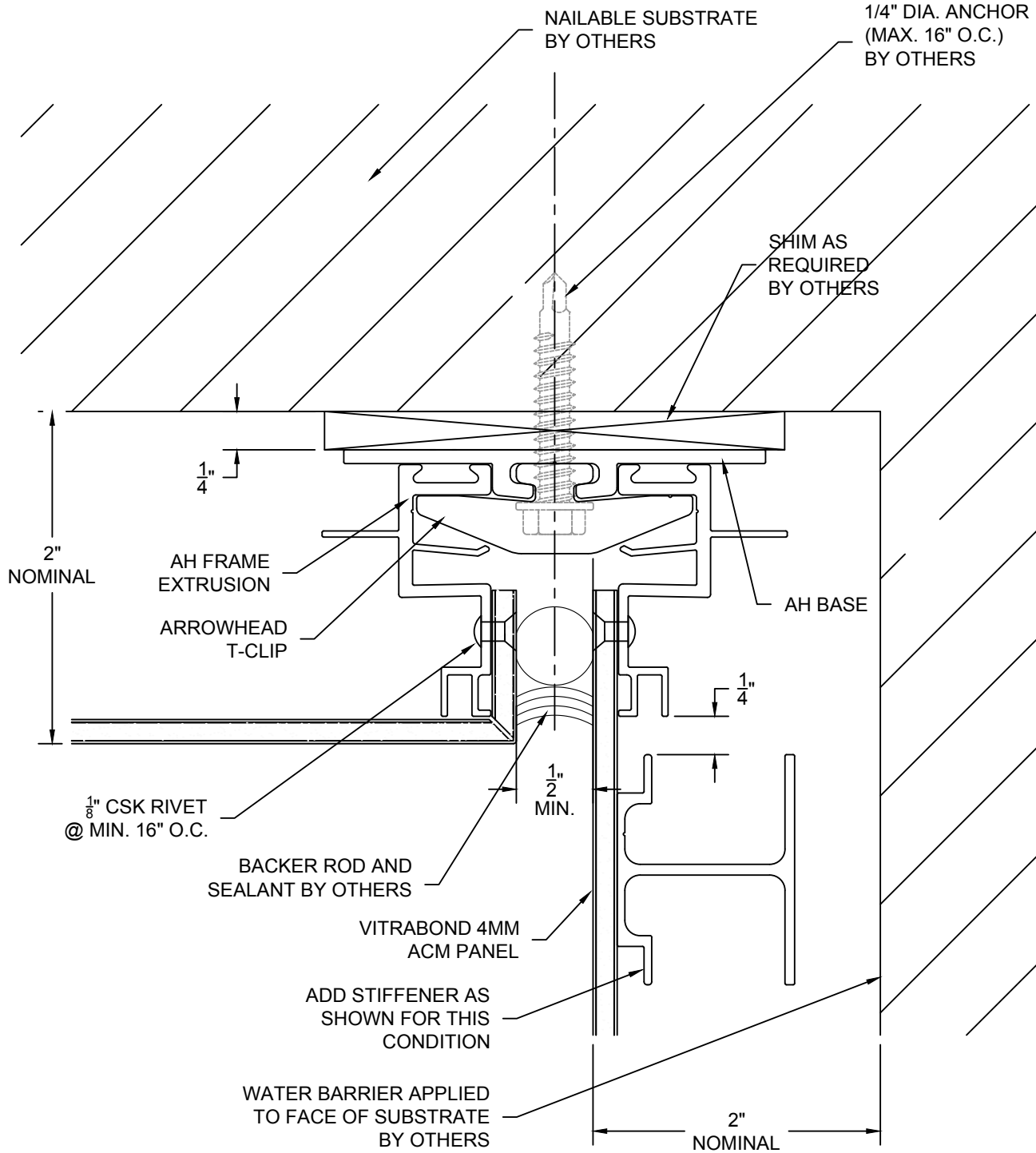
Sheet 7A	Drawn By NCDS	Project Number DWG-01	Project ARROWHEAD SEALED PANEL SYSTEM PARAPET DETAIL	  <small>www.fairview-na.com</small>
	Date Drawn 2017.04.24			
	Revisions No. _____ Date _____ No. _____ Date _____			
	NAILABLE SUBSTRATE BY OTHERS			
© Copyright Fairview Architectural LLC				



NOTE:
BRIDGE ACROSS STUDS WHERE
NON-NAILABLE SUBSTRATE EXISTS.



Sheet 7B	Drawn By NCDS	Project Number DWG-01	Project ARROWHEAD SEALED PANEL SYSTEM PARAPET DETAIL	  <small>www.fairview-na.com</small>
	Date Drawn 2017.04.24			
	Revisions No. _____ Date _____ No. _____ Date _____			
	© Copyright Fairview Architectural LLC			

NOTE:
BRIDGE ACROSS STUDS WHERE
NON-NAILABLE SUBSTRATE EXISTS.



Sheet 8	Drawn By NCDS	Project Number DWG-01	Project	ARROWHEAD SEALED PANEL SYSTEM INSIDE CORNER DETAIL	  <small>www.fairview-na.com</small>
	Date Drawn 2017.04.24				
	Revisions				
	No. _____ Date _____ No. _____ Date _____				
			© Copyright Fairview Architectural LLC		

NOTE:
BRIDGE ACROSS STUDS WHERE
NON-NAILABLE SUBSTRATE EXISTS.

1/4" DIA. ANCHOR
(MAX. 16" O.C.)
BY OTHERS

NAILABLE
SUBSTRATE
BY OTHERS

AH BASE

BACKER ROD
& SEALANT
BY OTHERS

1/2"
MIN.

1/4"

1/8" CSK RIVET
@ MIN. 16" O.C.

FACTORY SEALED
CORNERS

2"
NOMINAL

WATER BARRIER
APPLIED TO FACE
OF SUBSTRATE
BY OTHERS

SHIM REQUIRED
BY OTHERS

ARROWHEAD
T-CLIP



AH FRAME
EXTRUSION

VITRABOND 4MM
ACM PANEL

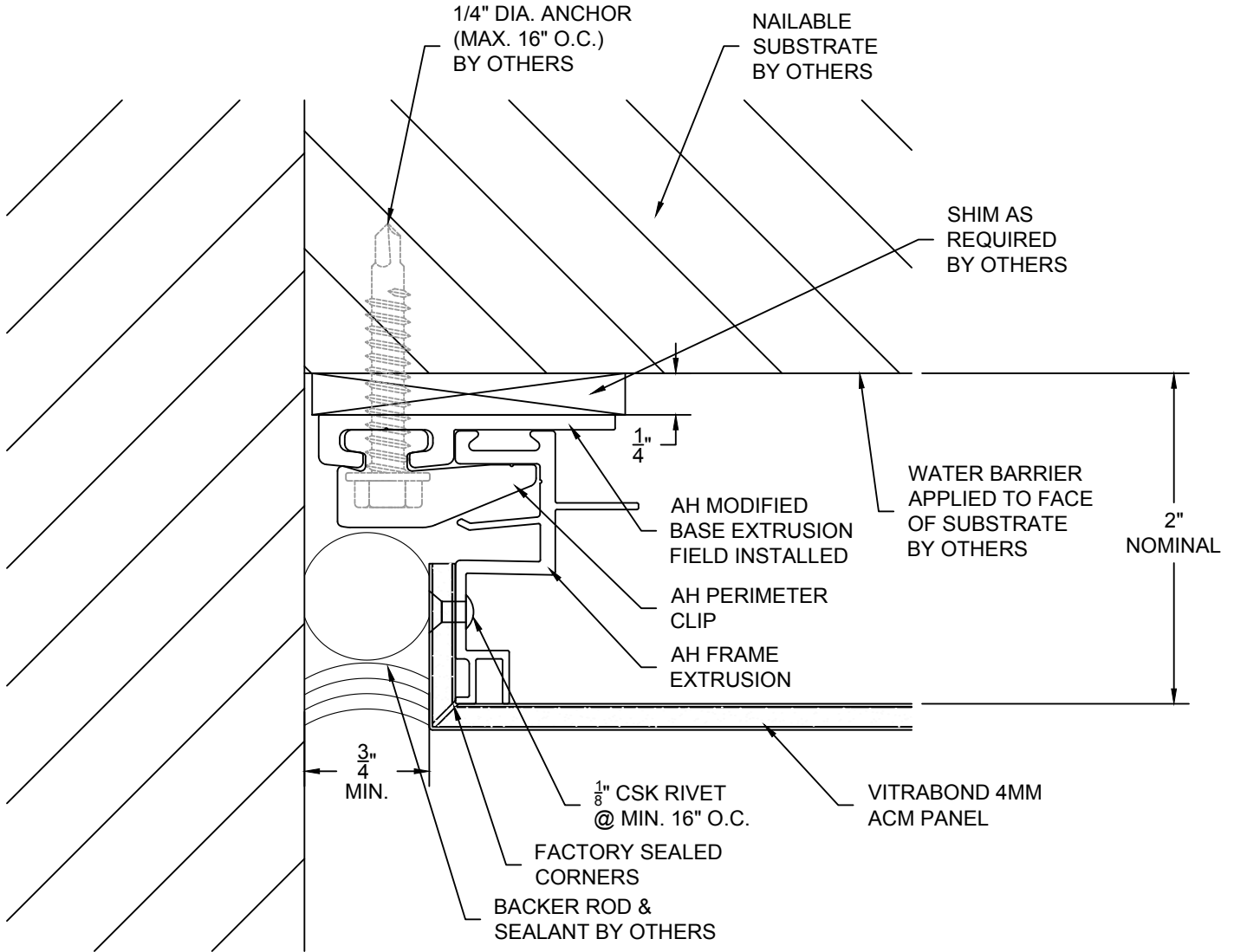
1/2"

FACTORY SEALED
CORNERS

ARROWHEAD SEALED PANEL SYSTEM

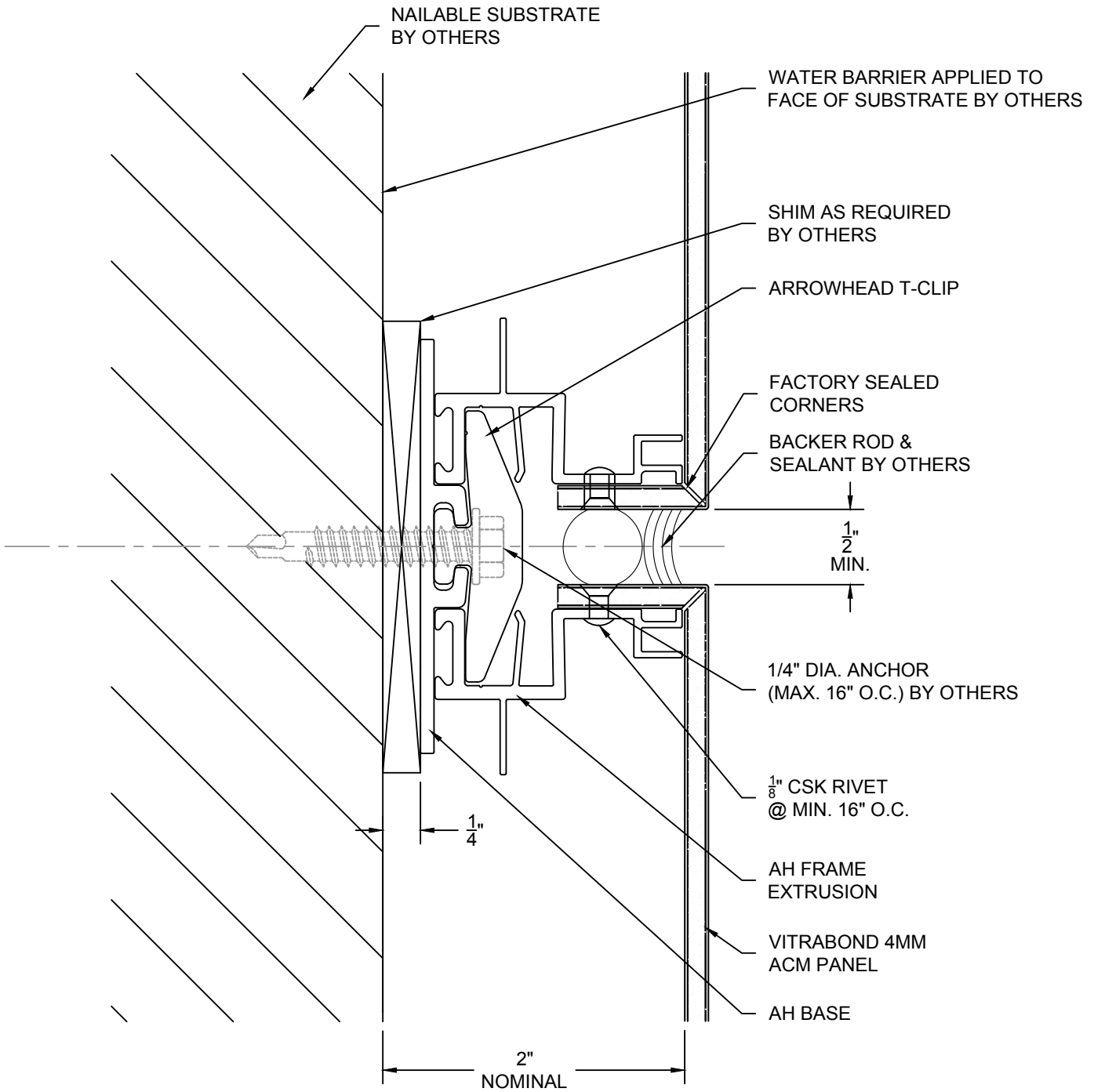
Sheet 9	Drawn By NCDS	Project Number DWG-01	Project ARROWHEAD SEALED PANEL SYSTEM OUTSIDE CORNER DETAIL	 FAIRVIEW ARCHITECTURAL  arrowhead ARCHITECTURAL PANEL SYSTEMS www.fairview-na.com
	Date Drawn 2017.04.24			
	Revisions No. _____ Date _____ No. _____ Date _____			
© Copyright Fairview Architectural LLC				



NOTE:
BRIDGE ACROSS STUDS WHERE
NON-NAILABLE SUBSTRATE EXISTS.



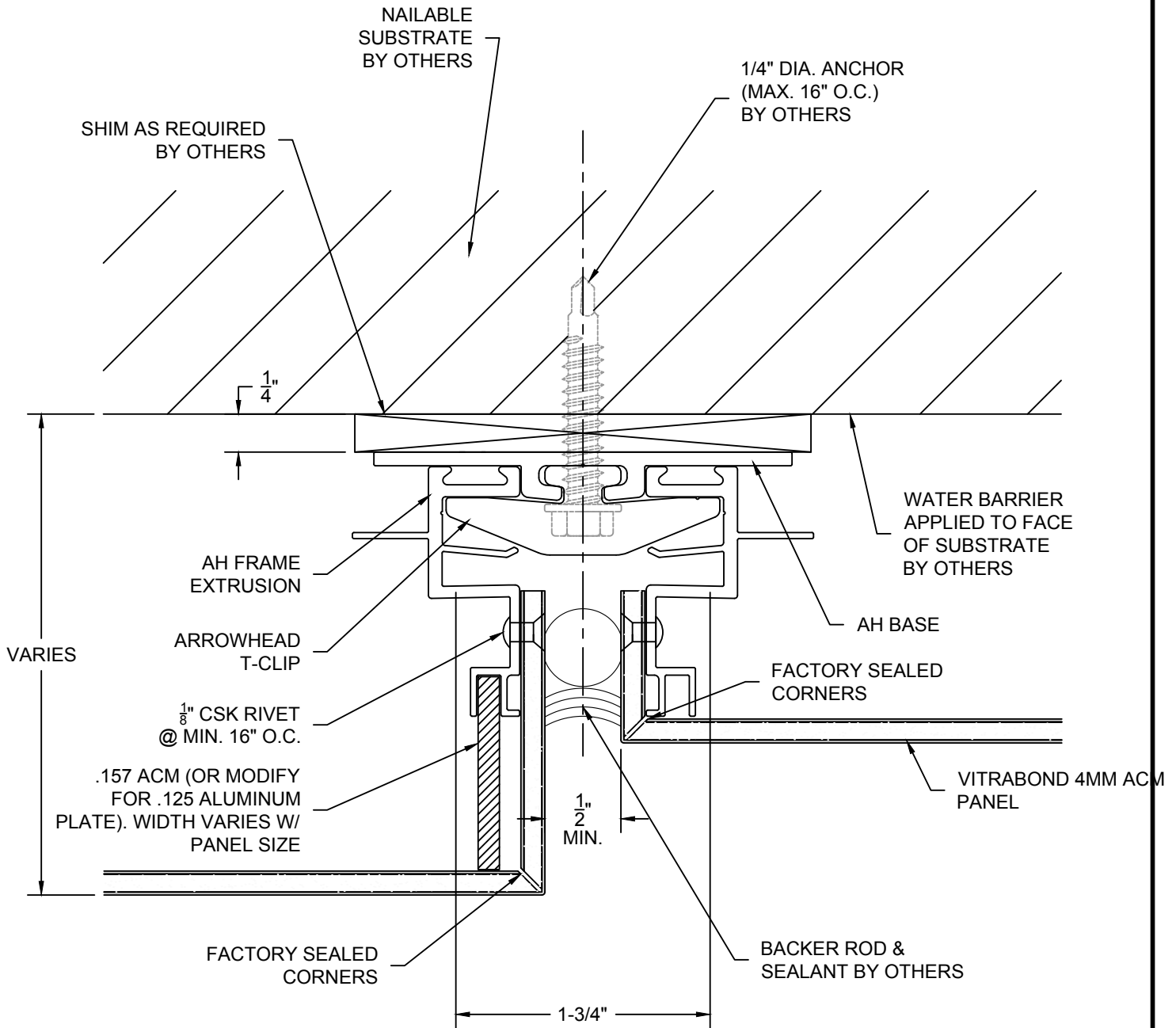
Sheet 10	Drawn By NCDS	Project Number DWG-01	Project ARROWHEAD SEALED PANEL SYSTEM VERTICAL JAMB DETAIL	  <small>www.fairview-na.com</small>
	Date Drawn 2017.04.24			
	Revisions No. _____ Date _____ No. _____ Date _____			
© Copyright Fairview Architectural LLC				

NOTE:
BRIDGE ACROSS STUDS WHERE
NON-NAILABLE SUBSTRATE EXISTS.



Sheet 11	Drawn By NCDS	Project Number DWG-01	Project ARROWHEAD SEALED PANEL SYSTEM TYPICAL HORIZONTAL DETAIL	 FAIRVIEW. ARCHITECTURAL <small>IN ASSOCIATION WITH</small>  arrowhead ARCHITECTURAL PANEL SYSTEMS <small>www.fairview-na.com</small>
	Date Drawn 2017.04.24		Copyright Fairview Architectural LLC	
	Revisions No. _____ Date _____ No. _____ Date _____			

NOTE:
BRIDGE ACROSS STUDS WHERE
NON-NAILABLE SUBSTRATE EXISTS.



Sheet 12	Drawn By NCDS	Project Number DWG-01
	Date Drawn 2017.04.24	
	Revisions No. _____ Date _____ No. _____ Date _____	

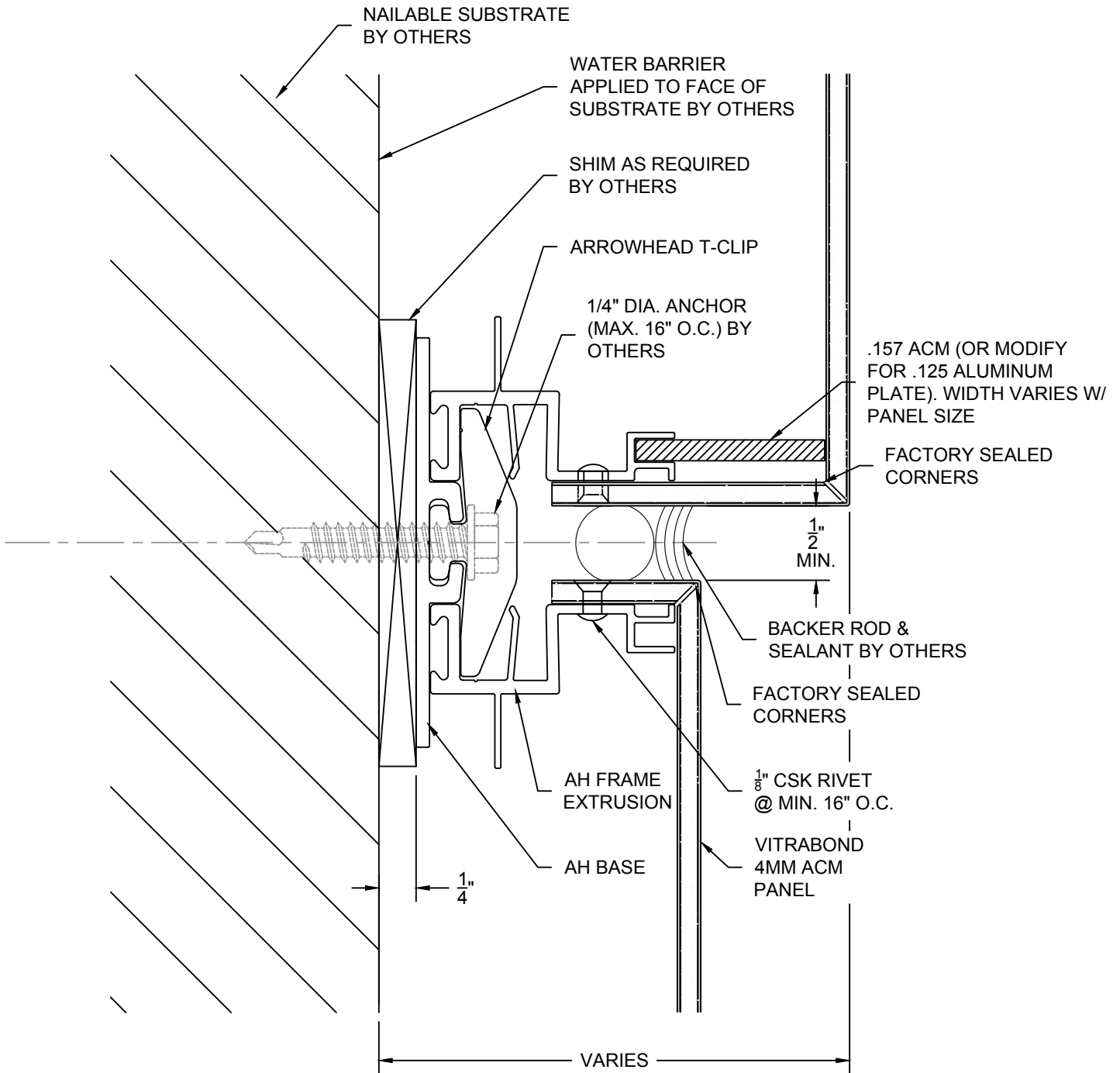
Project


**ARROWHEAD SEALED PANEL SYSTEM
DIFF. DEPTH JAMB DETAIL**

© Copyright Fairview Architectural LLC

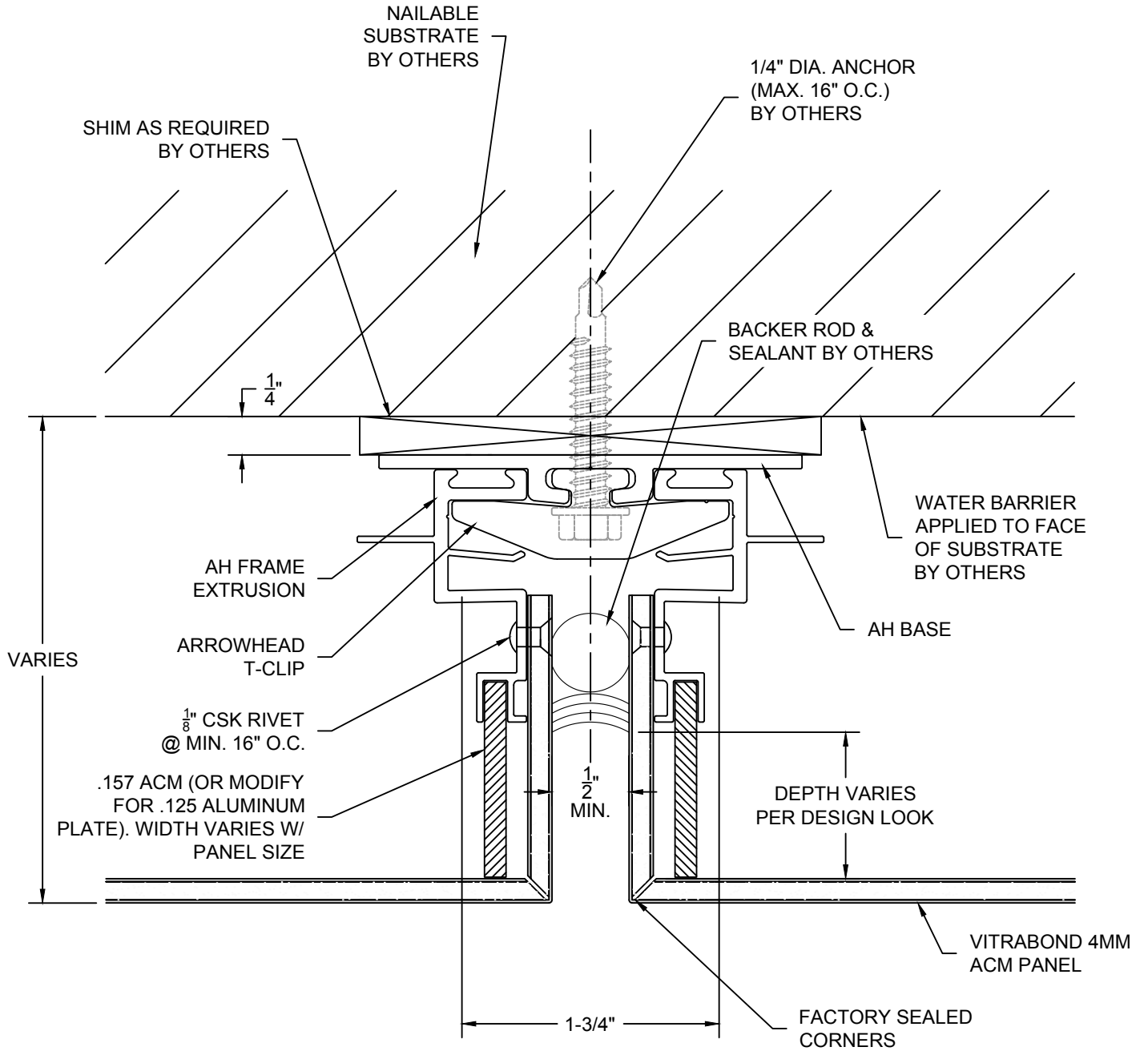




NOTE:
BRIDGE ACROSS STUDS WHERE
NON-NAILABLE SUBSTRATE EXISTS.



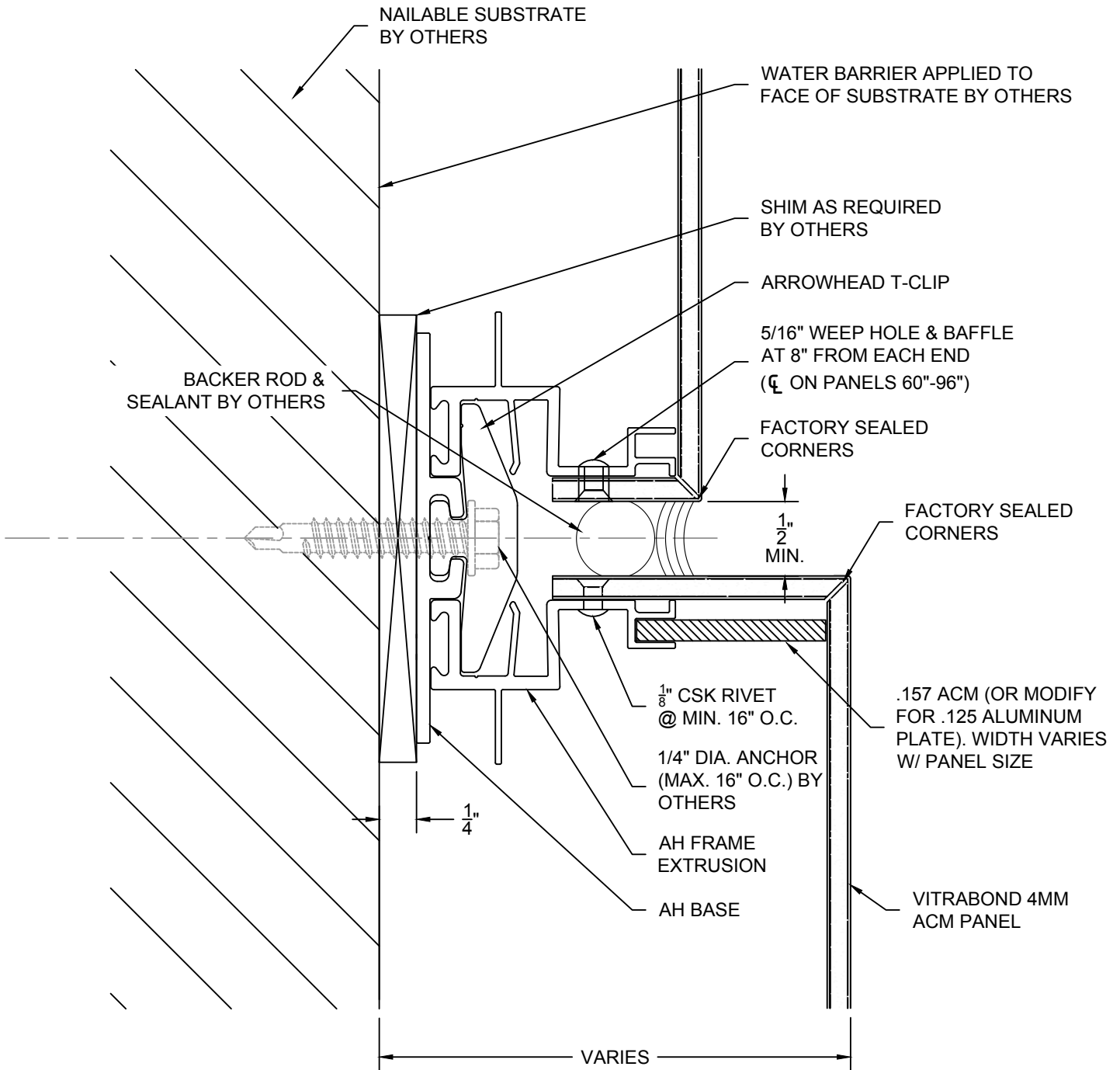
Sheet 13	Drawn By NCDS	Project Number DWG-01	Project ARROWHEAD SEALED PANEL SYSTEM DIFF. DEPTH SILL DETAIL	
	Date Drawn 2017.04.24			
	Revisions No. _____ Date _____ No. _____ Date _____			
© Copyright Fairview Architectural LLC			www.fairview-na.com	



NOTE:
BRIDGE ACROSS STUDS WHERE
NON-NAILABLE SUBSTRATE EXISTS.



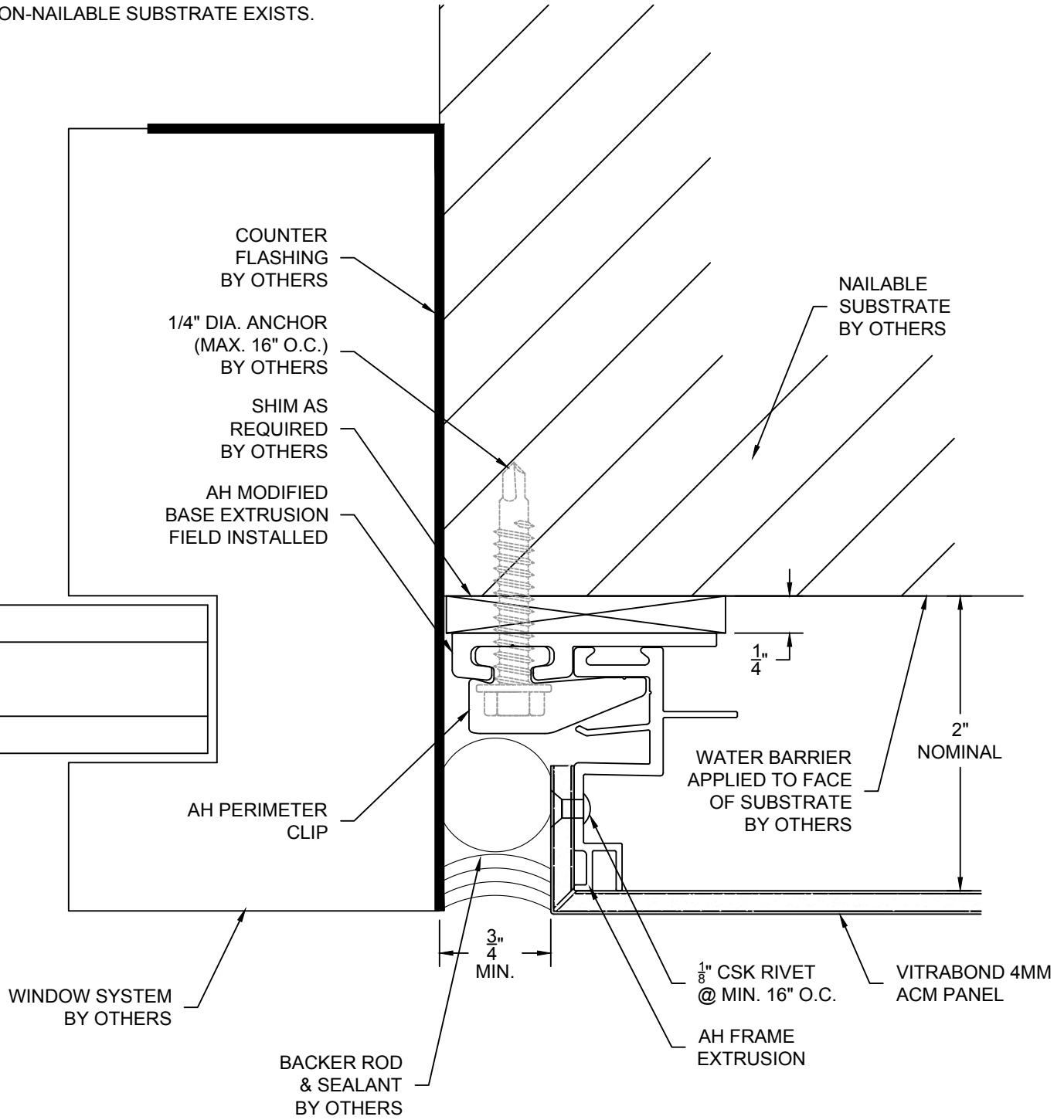
Sheet 14	Drawn By NCDS	Project Number DWG-01	Project ARROWHEAD SEALED PANEL SYSTEM DIFF. DEPTH VERTICAL DETAIL	  <small>www.fairview-na.com</small>
	Date Drawn 2017.04.24			
	Revisions No. _____ Date _____ No. _____ Date _____			
	Copyright Fairview Architectural LLC			

NOTE:
BRIDGE ACROSS STUDS WHERE
NON-NAILABLE SUBSTRATE EXISTS.



Sheet 15	Drawn By NCDS	Project Number DWG-01	Project ARROWHEAD SEALED PANEL SYSTEM DIFF. DEPTH HEAD DETAIL	  <small>www.fairview-na.com</small>
	Date Drawn 2017.04.24			
	Revisions No. _____ Date _____ No. _____ Date _____			
	Copyright Fairview Architectural LLC			

NOTE:
BRIDGE ACROSS STUDS WHERE
NON-NAILABLE SUBSTRATE EXISTS.



Sheet
16

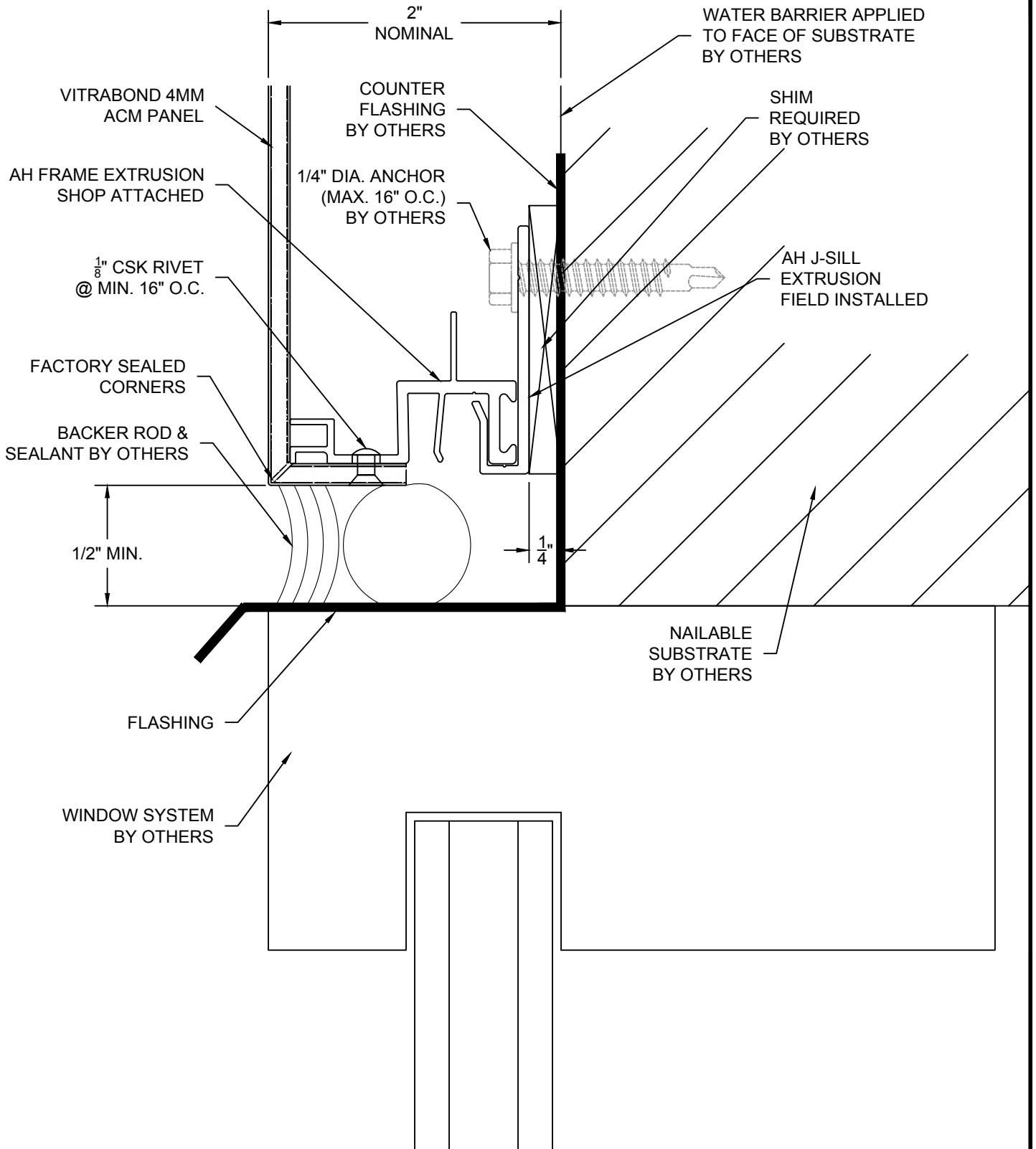
Drawn By
NCDS
Date Drawn
2017.04.24
Revisions
No. _____ Date _____
No. _____ Date _____



Project Number
DWG-01

Project
**ARROWHEAD SEALED PANEL SYSTEM
DISSIMILAR SYSTEMS - JAMB**
© Copyright Fairview Architectural LLC



NOTE:
BRIDGE ACROSS STUDS WHERE
NON-NAILABLE SUBSTRATE EXISTS.



Sheet 17	Drawn By NCDS	Project Number DWG-01	Project ARROWHEAD SEALED PANEL SYSTEM DISSIMILAR SYSTEMS - SILL	 FAIRVIEW. ARCHITECTURAL  ARCHITECTURAL PANEL SYSTEMS www.fairview-na.com
	Date Drawn 2017.04.24			
	Revisions No. _____ Date _____ No. _____ Date _____			
	Copyright Fairview Architectural LLC			